


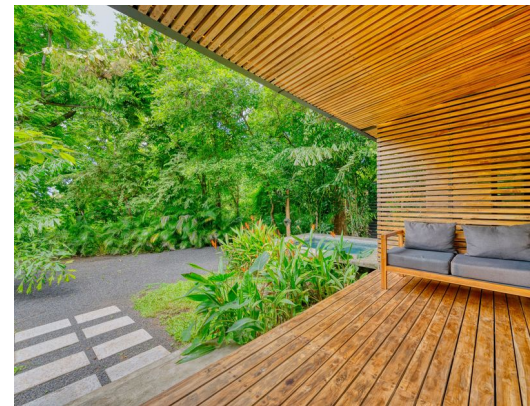
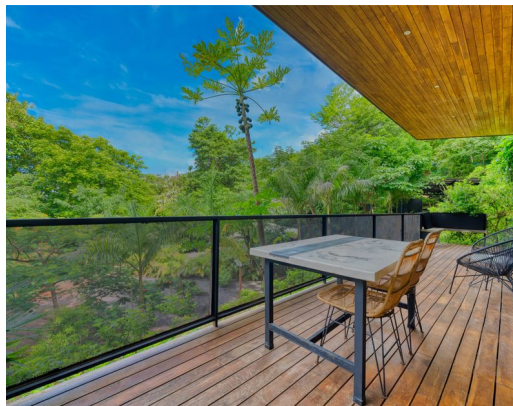
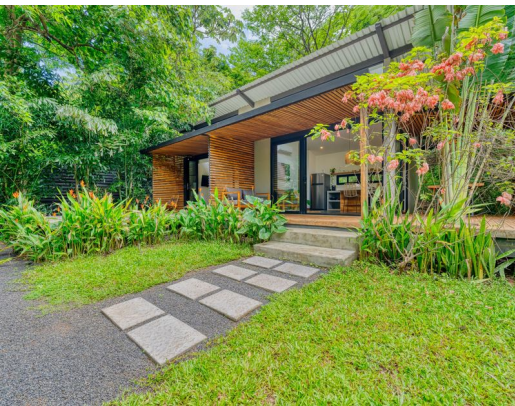
3 Detached Houses - Tropical Income Producing in Rancho Villareal

\$945,000

ID: 23541

 Tamarindo, Guanacaste

• Property Type: Hotel / Leisure • Bedrooms: 4 • Built: 2018 • Size: 5500 sq m • 1.36 Acres • Floor Area (SQFT): 3,767



- Status: Active/Published
- Appliances
- Close To Schools
- Gated Community
- Investment Opportunities
- Pets Allowed
- Parking Spaces
- Association Fee
- Close To Shops
- Income Producing
- Jungle Views
- Pool
- Air Conditioning
- Bbq Area
- Close To Transport
- Internet
- Multi-Family
- Surfers Pick

Property Description

Exceptional Multi-Unit Property in Rancho Villareal – Just Minutes from Tamarindo Beach Nestled within the secure and serene gated community of Rancho Villareal, this multi-unit property offers a rare blend of lifestyle and investment potential. Located less than a 10-minute drive from the vibrant Tamarindo Beach, residents enjoy the perfect balance of privacy, nature, and proximity to top-tier amenities including restaurants, boutique shops, grocery stores, white-sand beaches, and world-class surf. Set on a generous 1.3-acre lot (5,500 m²), the property features three thoughtfully designed residences. Each unit has been strategically positioned to offer privacy, while still allowing for ease of access – ideal for families or a mix of rental and owner occupancy. The property also includes ample parking for up to six vehicles, with a covered carport for two. The main residence, a stunning 2-bedroom Balinese-inspired home, was originally built in 2018 and beautifully renovated in 2024.

Additional

- ID 23541
- Active/Published
- 4 Bedrooms
- For Sale
- Hotel / Leisure
- Parking Spaces : 6
- \$945,000
- 4.5 Bathrooms

+506 8752-7000

20 m South from Hotel Nantipa,
Santa Teresa de Cobano, Puntarenas,
Costa Rica.



REAL ESTATE AGENT
Christina Essabba
Coldwell Banker Tamarindo Realty
[US Toll Free: 877-309-9238](tel:877-309-9238)
[Costa Rica Direct: +506 8752-7000](tel:+50687527000)

